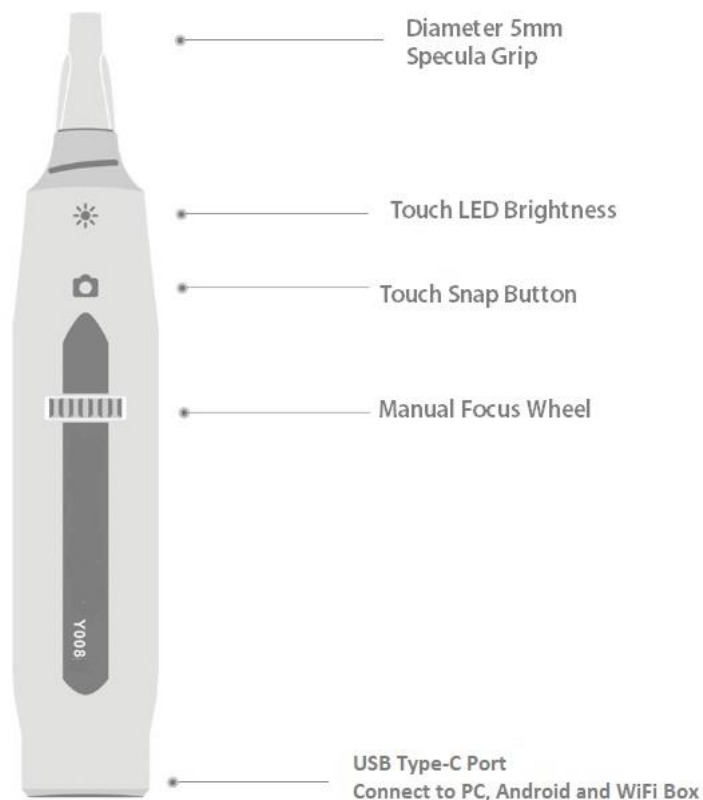


# Vividia T008 USB Manual Focus Digital Video Otoscope T008W Wireless Digital Otoscope Bundle

Thank you for purchasing Vividia product. We highly recommend that you read this user manual carefully before you use the product.

## Vividia® T008 Specifications

- Resolution: 1MP, 1080x720
- Measurement function ( For Windows )
- Anti-shake shutter function
- Built-in LED, adjustable by touch button
- Video speed: Max 30 fps
- Output interface: USB2.0
- Image format: jpg; Video format: mp4



## Package contents

- USB Otoscope X 1
- USB flash disk X 1
- One set Specula
- WiFi box ( optional )

## Installing and use of AP software and APPs

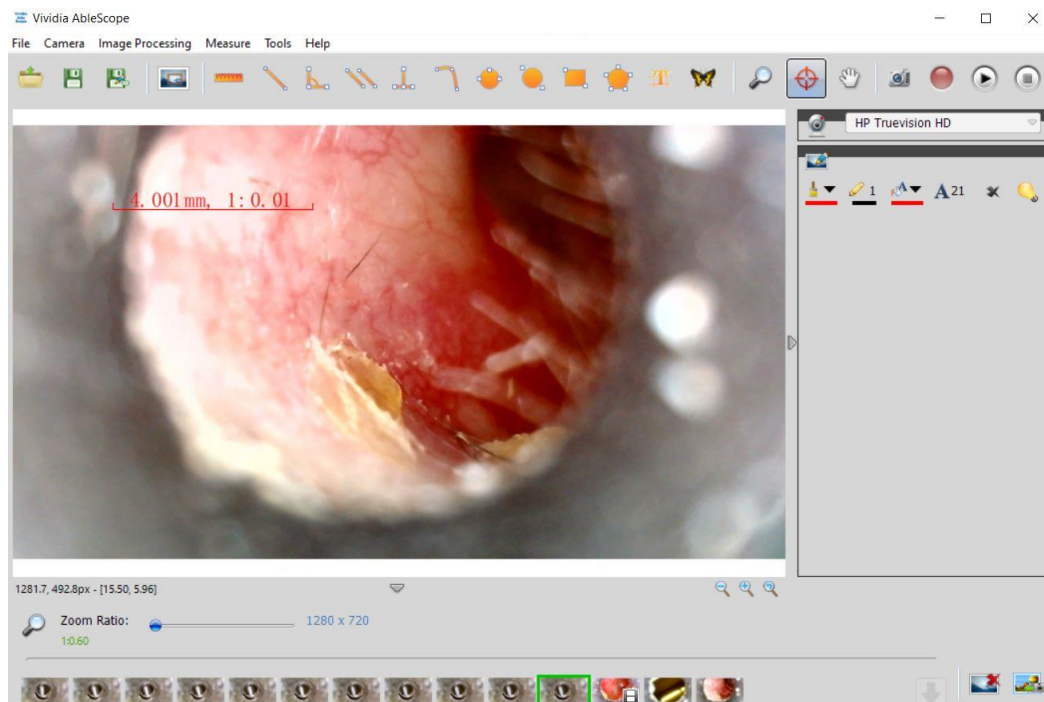
1. Connecting otoscope to computer/smartphone  
Computer connecting: Plug the device into computer by USB;  
Smartphone connecting: Insert USB of the device into W002A WiFi Box
2. Putting on the focusing cap / specula according to demand (If needed)
3. Software installing and operation (Please refer to software user manual for more details)

### Windows system:

- a. Window 10: use Microsoft “**Camera**”; or download “**Vividia Ablescope Viewer**”
- b. Window 8/7/xp etc: Download “**Vividia Ablescope Viewer**” software with photographing, measurement function, etc

How to get software: Copy from USB flash disk or visit our page

<http://www.oasisscientific.com/download> to download and install



Vividia Ablescope Viewer interface

**Mac system:** please use “**Photo Booth**” or “**FaceTime**” to call up the device directly. Or you can download and install “**Digital Viewer for Mac**”.

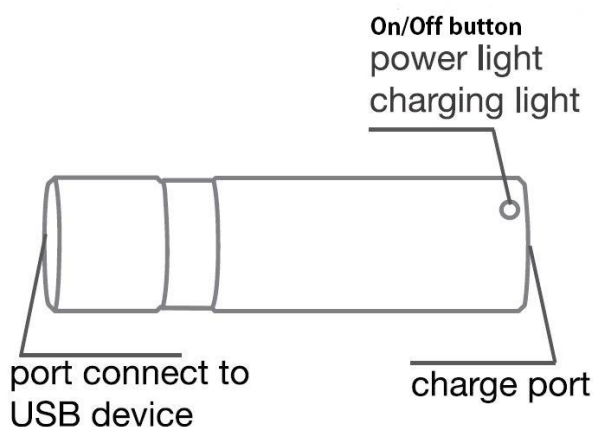
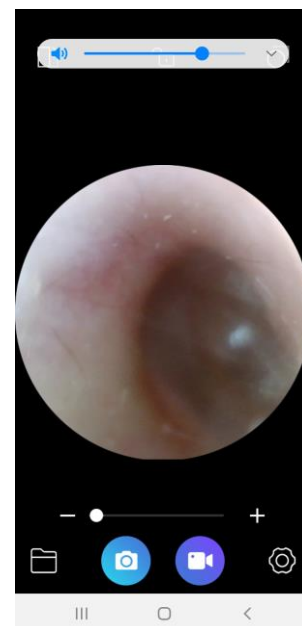
### Android phones and tablets:

1. OTG connection: download app “**OTG View**”, or “**MScopes**” from Play Store.

2. WiFi Wireless box connection: Need wifi box (sold separately). Same as iOS setup procedures. Download “Supereyes” from Play Store  
**iOS devices, iPhone and iPad:** Install WiFi Box APP. Please refer to WiFi Box W002 user manual for details on how to connect and set up.




**Steps:**

- a. Download app from Apple App Store, “Supereyes”
- b. Turn on W002 WiFi Box by press on/off button for 3 seconds
- c. From iPhone/iPad setting, Wi-Fi, find network “WiFiImage###” , connect or join. No password is needed
- d. Go back home, and open APP “Supereyes” . Now you should see preview.



W002 WiFi Wireless Box

System	AP software	Where to download
Windows XP/7/8/10	Camera; Digital viewer; Vividia Ablescope Viewer	<a href="http://www.vivida-tech.com/downloads">www.vivida-tech.com/downloads</a>
Mac OS	PhotoBooth; Digital Viewer for Mac	<a href="http://www.vividia-tech.com/downloads">www.vividia-tech.com/downloads</a>
Android by OTG	CameraFi; Mscopes; OTG View; USB Camera.	Google Play Store and CameraFi site or <a href="http://apkpure.com">apkpure.com</a>
Android by wifi	“Supereyes” or “Wifi Image”	Google Play Store
iOS by wifi box	“Supereyes” or “Wifi Image”	Apple APP Store

4. Rotate focus knob  until the image is clear. The shorter of the focal distance, the larger of the magnification and vice versa.
5. Slightly touch  button to adjust the brightness.
6. Slightly touch  button to take photo.

## Precautions

- The front lens part of this device is waterproof and can be cleaned by wipe disinfection; The focusing knob and touch button for brightness part are not waterproof. It's strictly prohibited to immerse the device for disinfection.
- Shutter touch/lighting touch are anti-shake touch buttons. The device will take photo and adjust brightness by touching the buttons slightly. If the light is off due to touching the light button by mistake, please touch the button once again and turn on the light.

## Trouble shooting

	Problems	Possible causes	Solution
1	Black screen	The light is off; The device is not connected well	Turn on the light; Reconnect;
2	The image is blurred	The lens is dirty; Inappropriate focal distance;	Clean the lens with an alcohol prep pad Adjust focal distance
3	The image is slow	Resolution is too high the configuration of computer or smartphone is too low	Select lower resolution Change better computer and smartphone
4	The device can not be recognized	The device is not connected well The device is faulty.	Check and reconnect; Return for factory repair

## Disclaimer

This product's manufacturer and retailer won't be responsible for any products damage results from improper use. This user manual's contents are synchronous with current product. Manufacturer won't be responsible for any error in contents due to products updates. Meanwhile we don't undertake the obligation of update text content and information.

## Contact us

Vividia Technologies

[www.vividia-tech.com](http://www.vividia-tech.com)

Oasis Scientific Inc.

[www.oasisscientific.com](http://www.oasisscientific.com)

[info@oasisscientific.com](mailto:info@oasisscientific.com)