

# Thermal Rod Camera User Manual

Model: TC-256 and TC-256T10 Bundle



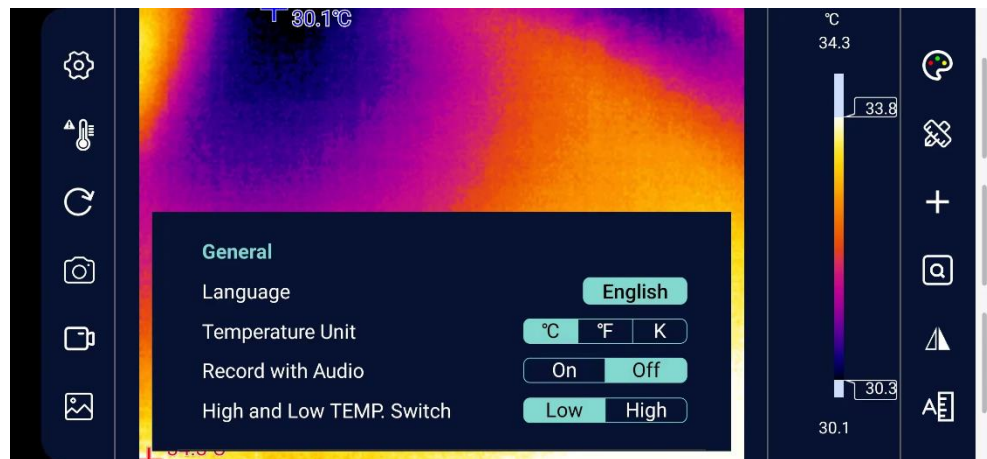
## Main features of TC-256 thermal rod camera:

- **Semi-Rigid Gooseneck Rod:** Easy to handle and use.
- USB-C output to Android phones or tablets with free App “Thermal Imager”.
- High thermal resolution, 256x192.
- Fast response.
- Broad temperature range, from -15°C to 600°C.
- Multiple color schemes such as iron, white hot, black hot, rainbow, red hot, and cold blue for different thermal imaging needs.

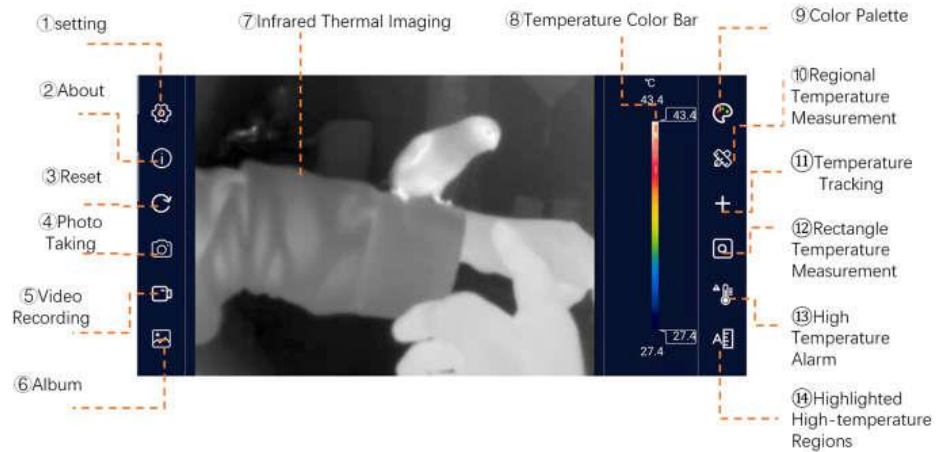
**TC-256T10 bundle** includes TC-256 USB thermal imaging camera and a 10” Android tablet with pre-installed app “thermal imager”.

## Free App for Android phones and tablets:

Download the free app “Thermal Imager” from Google play store or other online sources.



## App “Thermal Imager” Functions:



## Color Palette:

Iron		In the high-temperature region, red has a large proportion, which is suitable for detecting the scenario where the high-temperature region occupies the main proportion
White hot		The high-temperature section adopts white, and the full screen mainly adopts white-and-black transition, which is suitable for users of black-and-white traditional mode
Black hot		The high-temperature section adopts black, and the full screen mainly adopts black-and-white transition, which is suitable for users of black-and-white traditional mode
Rainbow		Red is used for displaying the maximum temperature, yellow is used for displaying the medium temperature, and blue and black are used for displaying the low temperature, which is suitable for scenarios with distinct colors of high and low temperature
Red heat		The main colors are red and black, and from the minimum temperature to the maximum temperature, the black, white and red transition

## Pre-cautions:

1. Don't use alcohol, detergent, and other organic cleaners to clean the lens, it will damage the coating of the lens.
2. Do not let sunlight, laser and other strong light sources directly shine the lens, otherwise the thermal imager sensor will suffer irreparable damage.
3. Enable the OTG features in an Android phone setting to run the APP. Search OTG in setting to enable OTG functions.