

Visual Presenter/Document Camera

User's Manual

Before beginning to operate this unit, please read the USER'S MANUAL carefully in order to make sure that the best possible performance is obtained.



Disclaimer

Information presented in this document has been carefully checked for reliability. However, no responsibility is assumed for inaccuracies. The information contained in this document is subject to change without notice. In no event will the producer be liable for direct, indirect, special, incidental, or consequential damages arising out of the use or inability to use this product or documentation, even if advised of possibility of such damages.

OPERATIONAL PRECAUTIONS

- Do not leave the equipment in direct sunshine or close to heating appliances.
- When the main unit needs cleaning, wipe it first with a damp cloth that had been soaked in solution of neutral detergent and tightly wrung; then dry it off with a clean cloth. Never use volatile solvents such as paint thinner, benzene insecticide, etc. on the unit as they may deform, discolour and damage it. Also do not immerse the unit in water, as it will result in breakdown.
- Read Instructions: all the safety and operating instructions should be read before the appliance is operated.
- Retain Instructions: the safety and operating instructions should be retained for future reference.
- Attachments: do not use attachments not recommended by the product manufacturer as they may cause hazards.
- Do not place this product in any humid, dusty, windy or vibrating location. Use this product in the following environmental conditions:

Temperature: 0_C~40_C (32_F~104_F)

Humidity: 30%~85% (No condensation)

- In handling (including setting up and storing) or carrying the scanner , be careful not to give an impact to the scanner head.
- Do not look into the lamp (LED) part directly at close range. It may damage your eyes.

Table of Contents

Chapter One: Product Brief Introduction	1
1.1 Products Overview.....	1
1.2 Warning and Precautions	1
1.3 Product Size Diagram	1
1.4 Product Schematic Diagram	2
1.5 Connection Diagram	3
1.6 Product Specification.....	4
1.7 Packaging & Accessories	5
Chapter Two: Installation	5
2.1 System Installation	5
2.2 Video Presentation.....	7
2.3 Interactive Whiteboard.....	8
2.4 Menu Bar Descriptions.....	10
Chapter Three: Offline Operating Instruction	13
Chapter Four: Service Statement	15

Chapter One: Product Brief Introduction

1.1 Products Overview

During multimedia teaching process, video display on or scan teaching reference books, textbooks, preparing data, interpretation of examples, student work, exercise books and examination papers, also use electronic whiteboard. We need to do a lot on video and image, such as: contrast, annotation, edit, rotate, scale, electronic courseware preparing. How to improve the quality and efficiency of the lecturer? How to record high quality video courseware? Become the urgent need of many teachers. Our visual presenter completely solved the above problem.

1.2 Warning and Precautions

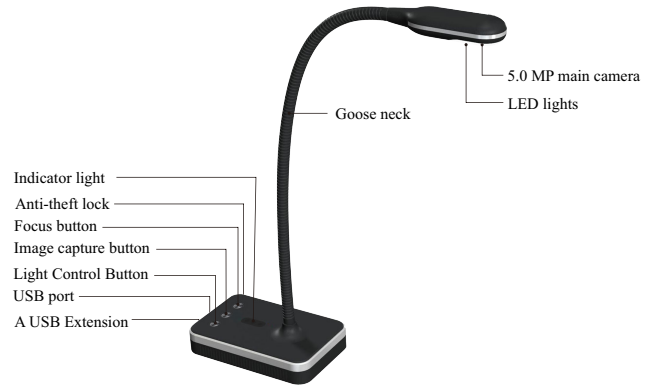
- Please do not use broken wires, plugs, or loose socket.
- Be careful electric shock, fire danger.
- Do not overly bent wire or be heavy pressure on the wire, easy cause wire breakage.
- Be careful electric shock, fire danger.
- Please do not place the equipment in the uneven places, equipment may fall damage or hurt someone.
- Please adjust the head of the device in right position to make sure a best results.
- If it is not adjusted in place, the image will be in distortion.

1.3 Product Size Diagram



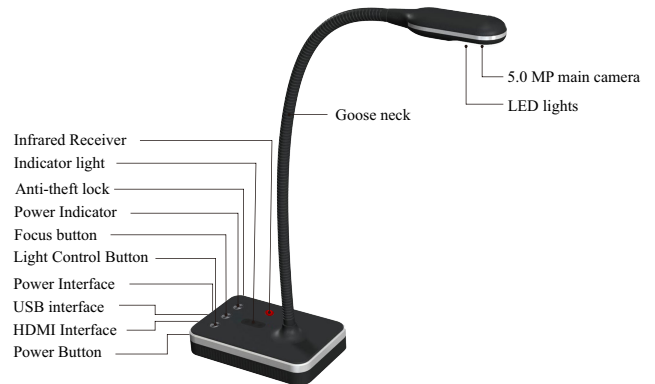
Model: VH800AF/VH801AF

1.4 Product Schematic Diagram



Model: VH800AF

- (1) Lens: Get image through the lens.
- (2) LED lights: 4 White LED Lights.
- (3) Goose neck: Support multidimensional and more direction for any angles of view rotation.
- (4) The power Indicator light.
- (5) Anti-theft lock.
- (6) Focus button: Click this button to focus at a time.
- (7) Image capture button: click this button to scan image.
- (8) Light Control Button: LED switch, support 3 level brightness.
- (9) USB port: through this port to PC or laptop.
- (10) A USB Extension.



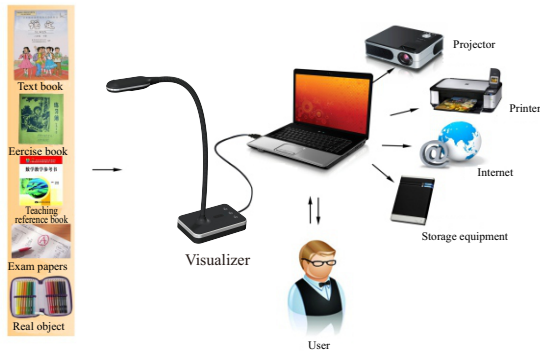
Model: VH801AF

- (1) Lens: Capture images through the lens.
- (2) LED lights: 4 White LED Lights.
- (3) Goose neck: Support Multi Dimension Multi Direction.

- (4) Infrared Receiver: The remote control should point at the receiver when use it.
- (5) The power Indicator light.
- (6) Anti theft lock.
- (7) Power Indicator: HDMI/USB for Online/Offline Switch Button, support HDMI offline and USB online switching.
- (8) Focus button: Click this button to focus at a time.
- (9) Light Control Button: LED switch.
- (10) Power Interface:12V/1.5A Adapter.
- (11) USB interface: Connect to PC.
- (12) HDMI Interface: HDMI Output connect to the projector, TV and etc monitor equipment.
- (13) Power Button: Power supply switch.

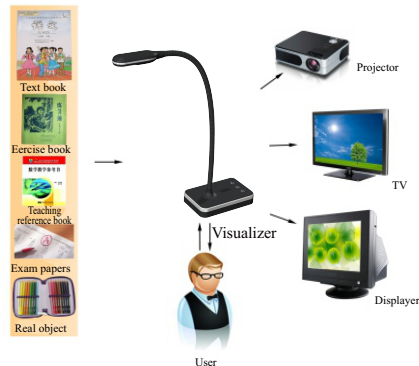
1.5 Connection Diagram

1.5.1 Online Mode System Diagram



Note: Please connect a USB cable to PC, start the software and the interface can be directly previewed.

1.5.2 Offline Mode System Diagram



Note: Open the device and connect to power, also connect HDMI to TV or projector, direct access to preview interface..

1.6 Product Specification

No.	Specifications	Model	
		VH800AF	VH801AF
1	Resolution	5.0 MG(2592*1944)	5.0 MG(2560*1920)
2	Working mode	Support online	Support online & offline mode
3	Medium type	Book, file, magazine, picture, 3D objects, etc.	Book, file, magazine, picture, 3D objects, etc.
4	Scanning size	A4	A4
5	Scanning speed	1S	1S
6	Focus mode	Auto focus	Auto focus
7	Frame rate	30Fps	30Fps
8	Image color	24 bits	24 bits
9	Image Control	Brightness,exposure, sharpness, hue, gain	Brightness,exposure, sharpness, hue, gain
10	Image format	JPG, TIF, BMP, PNG	JPG, TIF, BMP, PNG
11	Video format	AVI, WMV	AVI, WMV
12	Sensor	COMS	COMS
13	Light source	Natural light, LED light	Natural light, LED light
14	Driver	Driver	Driver
15	MIC	Nonsupport	Nonsupport
16	Interface	USB2.0, USB2.0 Extend Interface	USB2.0, HDMI
17	Remote control	Nonsupport	Support
18	Power supply	Nonsupport	12V/1.5A adapter

1.7 Packaging & Accessories

- 1) Device
- 2) CD content: software, driver, manual
- 3) USB2.0 cable---1.5m Type A male to Type B male
- 4) Manual
- 5) Power Adapter (for VH801AF only)
- 6) Remote control (for VH801AF only)

Chapter Two: Installation

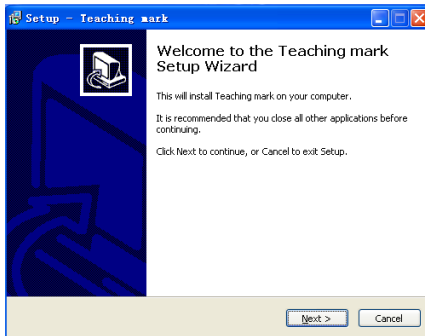
2.1 System Installation

2.1.1 System Requirements

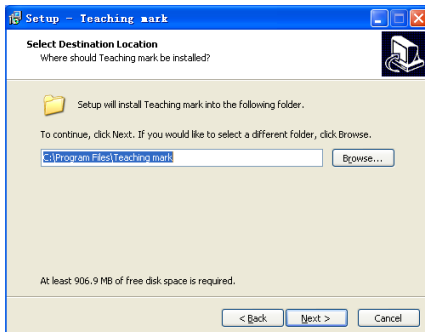
- (1) Hardware: CPU Pentium 4 above, Ram 256MB, CD-ROM.
- (2) USB Interface: The computer must be in accordance with USB2.0
- (3) Operating system: Windows XP/ Windows 2003/ Windows Vista/ Windows 7/ Windows 8

2.1.2 Program Installation

1. Insert the CD, double click software installation program, enter the installation wizard interface. Click "next" to continue.

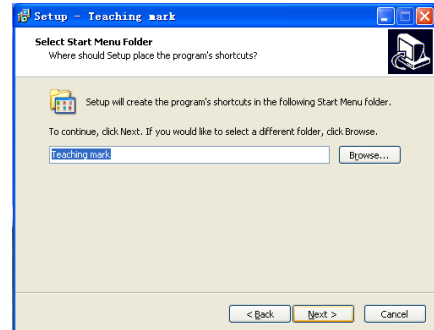


2. Please click "browse" to choose install path. Click "next" to continue. (Note: If you don't want to change the path, please click "next" directly.)

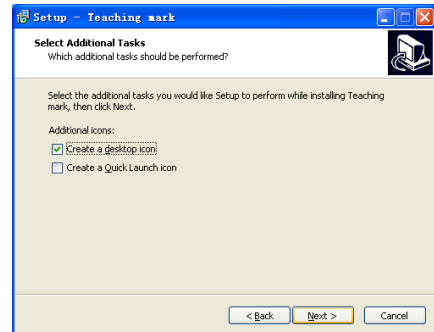


3. Please click "Browse" and choose a location to create a shortcut to the program.

Note: If you don't want to change the path, please click "next" directly.



4. Please choose a location to create a desktop icon, or create a quick start icon, if you don't want to create, just cancel the choose, and click "next".



5. Please choose "Installation" to automatic installation interface.

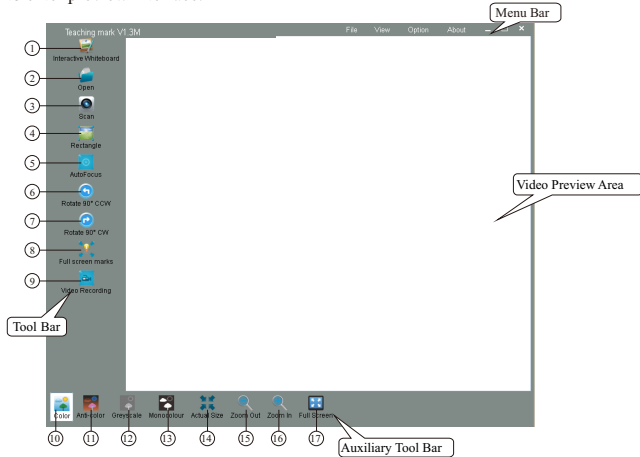
A note will automatically pop up when the installation is completed. Please click "Finish" to complete the installation.

2.2 Video Presentation

2.2.1 Software Interface

Open software: double click software icon [Teaching mark] on desktop, or via the path [Start] ➔ [All programmers] ➔ [Teaching mark].

Note: After connecting device, default to USB output, Open the software to enter preview interface.



2.2.2 Function instruction

Video Mode

Preview scanning area and scanning effect.

Tools Bar

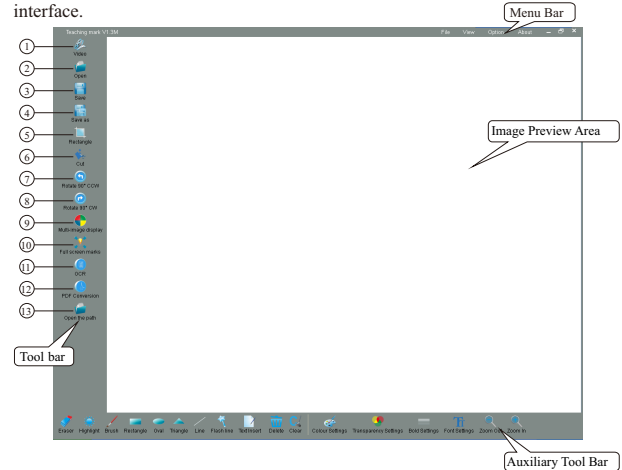
- (1) Interactive Whiteboard: To click the button to enter into editing interface, there are many functions, such as making marks, editing, images comparisons on the same screen etc.
- (2) Open: to open the file from the storage path.
- (3) Scan: to start a scanning process.
- (4) Rectangle: to select a rectangle area to scan.
- (5) Auto Focus: Press the button and the device will focus automatically. (VH801AF has no auto focus button on the Software)
- (6) Rotate 90° CCW: to rotate the video image 90 degrees anti-clockwise.
- (7) Rotate 90° CW: to rotate the video image 90 degrees clockwise.
- (8) Full screen marks: to annotate any files from the pc with Aided Tools Bar, detailed Illustration see Aided Tools Bar.
- (9) Video Recording: Video record function.
- (10) Color: to present an image in its original color.
- (11) Anti-color: to present an image in opposite color mode.

- (12) Greyscale: to present an image composed exclusively of shades of grey.
- (13) Monocolor: to present an image composed exclusively of black and white.
- (14) Actual Size: to present an image according to the real dot density.
- (15) Zoom Out: to present a scanned image in bigger size.
- (16) Zoom In: to present a scanned image in smaller size.
- (17) Full Screen: to present the video image in full screen mode.

2.3 Interactive Whiteboard

2.3.1 Interface Overview

Under 'Video Mode', left click "Electronic whiteboard" to enter its interface.



2.3.2 Function instruction

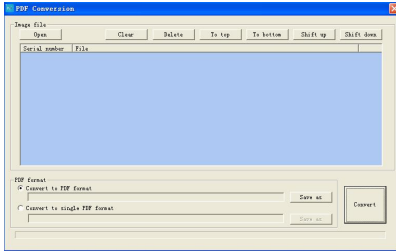
Video Mode

Images preview, annotations and editing.

Tools Bar

- (1) Video: to click the button to enter into Video Mode.
- (2) Open: to open the file from the storage path.
- (3) Save: to save the image into saving location.
- (4) Save as: to save an image into another location or in another format.
- (5) Rectangle: to select a rectangle area to scan.
- (6) Cut: after rectangle select, click this button to save only selected area.
- (7) Rotate 90°CCW: to rotate the video image 90 degrees anti-clockwise.
- (8) Rotate 90°CW: to rotate the video image 90 degrees clockwise.

- (9) Multi-image display: to display and contrast 2 or 4 images on the same screen at the same time.
- (10) Full screen marks: to annotate any files from the pc through Aided Tools Bar, detailed Illustration see Aided Tools Bar.
- (11) OCR: Optical character recognition (Abby.OCR) to transfer from an uneditable image into an editable EXCEL,WORD or TXT file.
- (12) PDF Conversion: Convert image into PDF format as below:



- [1] Open File: open images in the directory and import those need to generate PDF format.
- [2] Clear the list: Clear the imported images.
- [3] Delete file: delete images separately.
- [4] Moved to the top: select the first image.
- [5] Move to the end: select the last image.
- [6] Last: select the last image.
- [7] Next: select the next image.
- [8] Select "convert all into one": will generate all images as one PDF format.
- [9] Save as: set the saving path.
- [10] Select "A single PDF file": will generate all images to PDF file separately.
- [11] Save as: set the saving path.
- [12] Start converting: convert PDF.

- (13) Open the path: Open the directory where the scanned images located.

Auxiliary Tool Bar



- (1) Eraser: to erase the image or marks.
- (2) Highlight: The area of rectangle select to be highlighted.
- (3) Brush: to paint the image with any shape.

- (4) Rectangle.
- (5) Oval.
- (6) Triangle.
- (7) Line.
- (8) Flash line.
- (9) Text inserts.
- (10) Delete: to delete the selection.
- (11) Clear: to clear all the marks.
- (12) Color setting.
- (13) Transparent setting.
- (14) Bold Settings.
- (15) Font Settings.
- (16) Zoom out: to present a scanned image in smaller size.
- (17) Zoom in: to present a scanned image in bigger size.(Note: Only when make full-screen annotations; two buttons will appear as follows.)

2.4 Menu Bar Descriptions

2.4.1 Diagram

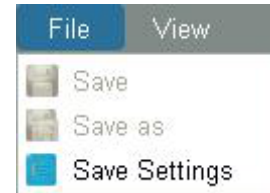
The menu bar under **【Video】** and **【Electronic whiteboard】** see as below:



- ① **File**
- ② **View**
- ③ **Options**
- ④ **About:** Display software version information.
- ⑤ **Screen switch:** to switch software to quit when the user temporarily stop using the software.
- ⑥ **Maximize and minimize:** to select size of the interface.
- ⑦ **Shutdown:** Shut down the software directly.

2.4.2 Instruction

- ① **File**



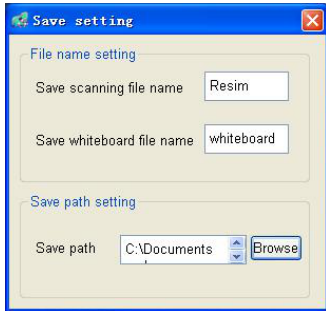
[1] Save: To save images according to the specified file name, format and path.

(Note: This function is invalid when it is grey.)

[2] Save as: To save images into user-defined name, format and path.

(Note: This function is invalid when it is grey.)

[3] Save Setting: to set the image name and saving path as below:



② View



[1] Actual Size: Set the image to the current pixel size.

[2] Full Screen: to set the current video in full screen mode.

[3] Video Property: to set video brightness, Contrast, Saturation, Binaryzation(Only valid in black and white.), Exposure, Resolution etc.

As shown below:

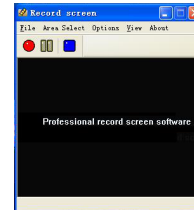


③ Options



[1] Screen Video Record:

to record the user's any operation on desktop, as shown below:



(1) File selection: start, stop, pause, exit screen record.

(2) Area selection: select the recording area by manual or fixed area or full screen.

(3) Options: Video Select, Sound Record, Audio Select, Motion Snapshot, Audio Rate, and Program Options.

(4) View: Tool Bar, Status Bar, Short Mode for selection.

(5) About: The version number of Screen-recording software.

Chapter Three: Offline Operating Instruction

Note: for VH801AF only

3.1 Offline Mode Descriptions

HDMI Mode

Step 1: Connect a projector or related TV displayer to "HDMI" port, make the adapter connect to the port DC 12 V and turn on the power.

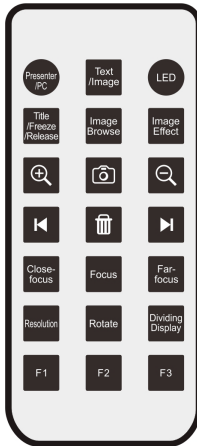
Step 2: Turn the power switch to "ON" switch and go to working status.

Step 3: The device is directly going into image preview.

Step 4: After going to the image preview interface, some features like documents or material presentation pictures displaying, picture browsing, amplification, narrow, title/lifting/freeze can be operated by remote control, more instructions refer to 3.2







3.2 Functions Instructions

The overall schematic of remote control as follows.



Key Description:

1. Presenter/PC: Default to USB and VGA output simultaneously when power on, press to switch VGA, HDMI, USB or CVBS mode.
2. Text/Image: Default to image mode when power on, press to switch into text mode.
3. LED: Default to light off when power on, press to turn on the LED light.
4. Title/Freeze/Remove: Title freeze by pressing firstly; Title freeze release by pressing secondly, Full-picture freeze by pressing thirdly; Full-picture freeze release by pressing fourthly, and so forth.
5. Image Browse: To browse images starting from the first one, to switch images in order by each press; By 2 seconds pressing to exit.

6. Image Effect: Default to color mode when power on . Black and white mode by pressing firstly; negative by pressing secondly; Mirror by pressing thirdly; and so forth.
7.  : To Zoom in images continuously.
8.  : Snapshot: Under VGA mode, to store scanned images with quantity 3-32pcs by different resolution; automatically covering first picture once storage reaches full.
9.  : To Zoom out images continuously.
10.  : Previous: Press "Previous" to browse the previous image.
11.  : Delete: Delete the current images.
12.  : Next: Press "Next" to browse the next image.
13. Close-focus: Press to get close focus.
14. Focus: Default to focus once when power on, press to get much more clear focus based on the current environment. Note: Please never press too frequently which is harmful to the camera.
15. Far-focus: Press to get far focus.
16. Resolution: Default to SXGA resolution (1280x1024) ,Switch respectively to 1080、XGA(1024×768)、720P、SVGA(800X600).
17. Rotate: Default to rotate images 90°, 180°, 270°, and normal direction.
18. Dividing Display: Dividing-screen display by showing still images on the left and real-time images on the right. Dividing display release by pressing again.

Chapter Four: Service Statement

After-sale Service and Guarantee.

1. All after-sales policy of this product will abide by national “three guarantees” after-sales provisions.
2. Maintenance service does not include freight, will charge components and inspection cost from the second year.
3. While sending the product for repairs, must accompany full package for insuring repairing quality.
4. Non guaranteed range
 - The product is damaged by natural and irresistible disaster reason.
 - Damage to the product is caused by human factors.
 - Damage to the product is caused by user's improper operation.
 - Due to other software installation and setting cause using problem and fault.
 - Caused by computer virus and fault.
 - If user tore off the original warranty sticker with serial NO. or sticker without serial NO. We will cancel the guarantee rights and shall not provide maintenance services.
5. Defective products caused by the above non warranty range will charge per the company's standard regulations, it has nothing to do with guarantee period.
6. The product warranty range only for product ontology, not including warrantee obligation for consumable items.
7. Our company will not take any responsibility for buyer's vested Interests and predictably possible damages.