



Operating Manual for StirPC Software

I. Introduction

The StirPC software is free for use with SCILOGEX-MS-H-Pro Hotplate-Stirrer and SCILOGEX-MS-Pro Digital Magnetic Stirrers. (Copyright Dragon Laboratory Instruments Limited.)

II. Functions

The functions of StirPC are as follows:

1. Set the speed and temperature of the apparatus.
2. Refresh the real-time speed and temperature.
3. Show the historical speed and temperature in a graph.
4. Control the "Start/Stop" of the apparatus via a PC.
5. Save the historical data of this time and create the excel file.

III. Preparation for Installation

Before running the StirPC software, the following requirements should be met.

| | Items | Remarks |
|-----------------------------|--------------------|--|
| Hardware Preparation | Computer | Hardware configuration: 9-pin serial port, other configurations are normal. Operating system: Windows 2000 or higher |
| | RS232 serial cable | Available from computer store. |
| Software Preparation | StirPC | StirPC for free can be downloaded from www.dragon-lab.com |
| Instruments | MS-H-Pro or MS-Pro | Purchased from DragonLab. |

IV. Installation of System

Software Installation

1. Decompress the setup file.
2. Enter the setup directory; click on the "setup.exe" program, then the installation of the software starts.
3. Install StirPC according to the prompt.
4. Attach hardware connection with an RS232 serial cable to the back of the instrument and PC.

Note: MS-H-Pro/MS-Pro should be switched off when connecting.

V. Introduction and Operation

1. Switch on the power of MS-H-Pro/MS-Pro, double click the shortcut icon or find StirPC in the "procedure", open the software.
2. After the StirPC is started, the window as Fig. 1 is shown. Select the PC port No. according to the serial port connected to the RS232 serial cable, the system default is "COM1". The Baud rate of this port should be set to be 9600bps and the change of other Baud rate will lead to communication failure.

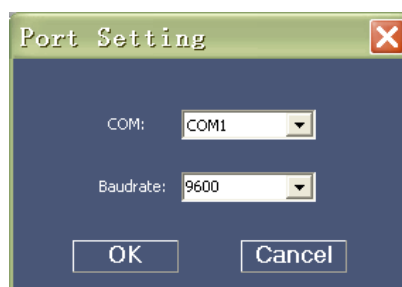


Fig. 1

3. After the setup is accomplished, click “yes”, the operation page see Fig.2 will pop out after 3-5 seconds.

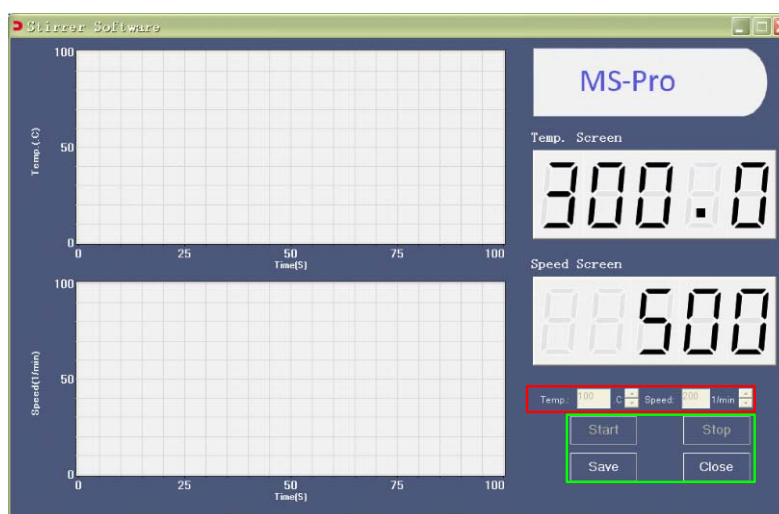


Fig. 2

4. The temperature and speed can be set in the “setting section”.
The setting can be carried out by manually inputting the numbers or clicking the ↑ or ↓ buttons;
5. After the temperature and speed is set, click “start” to initiate the apparatus; the “stop” is clicked to end the operation. “Save” can be pressed during the process of operation or at the end of operation.

The temperature and speed adjusting knobs for should not be changed while the software is in use.

6. The real-time temperature and speed will be displayed on the right windows. The historical temperature and speed curve will be shown on the left windows.
7. The data of the operation will be saved in Excel version by clicking “save”.